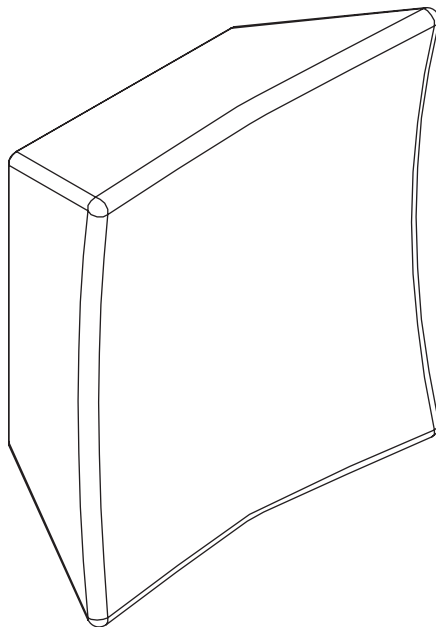


Installation guide  
SE handle  
Dione

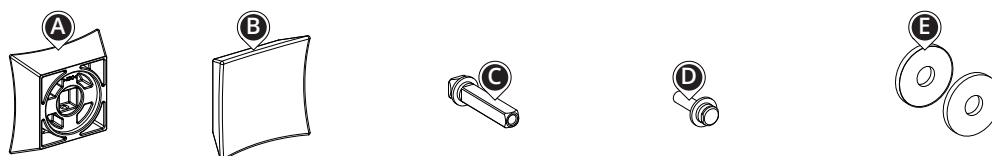


Smart Entrance

BY POLLMEIER

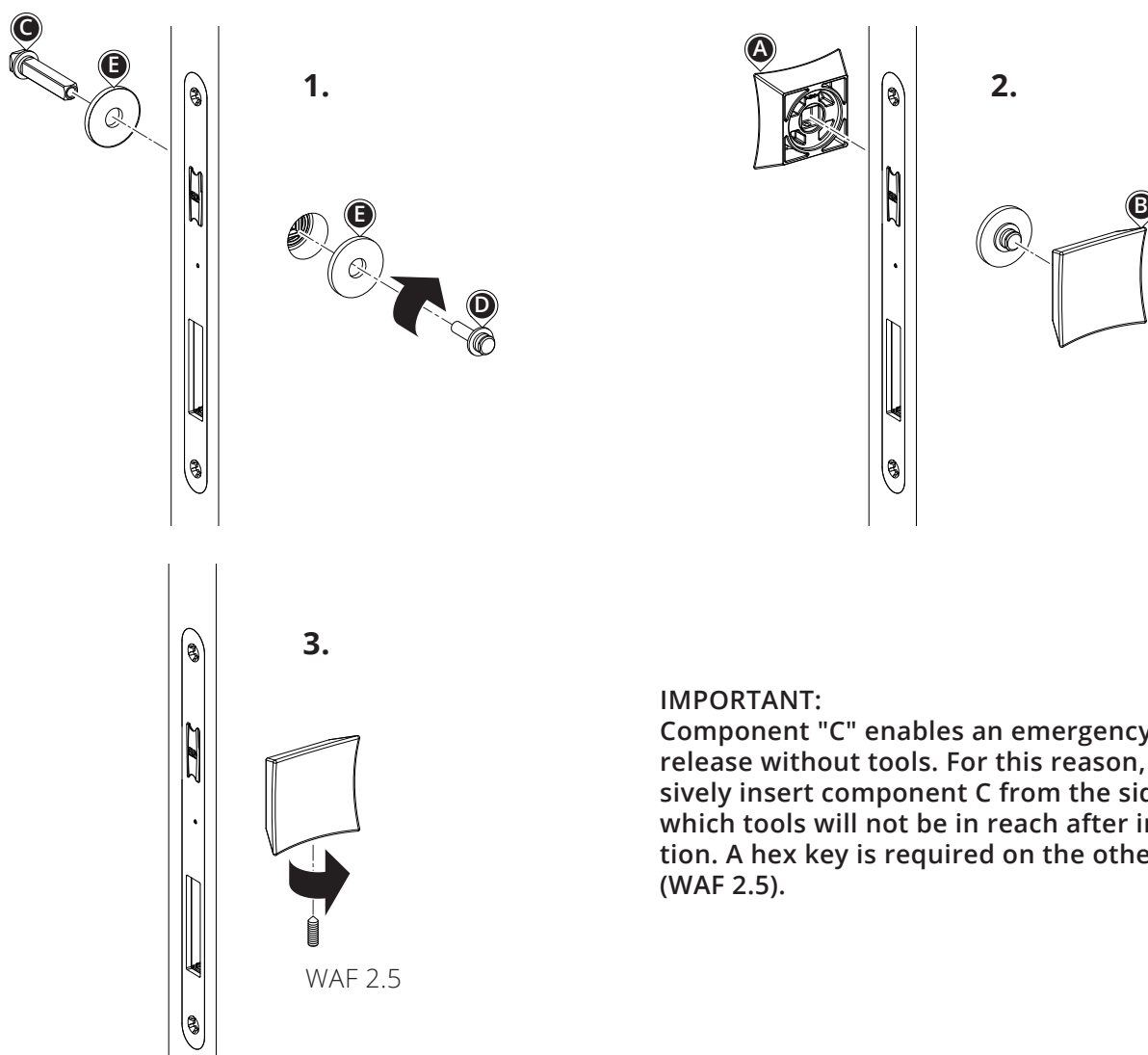
## Components

Dione handle set



## Installation step 1

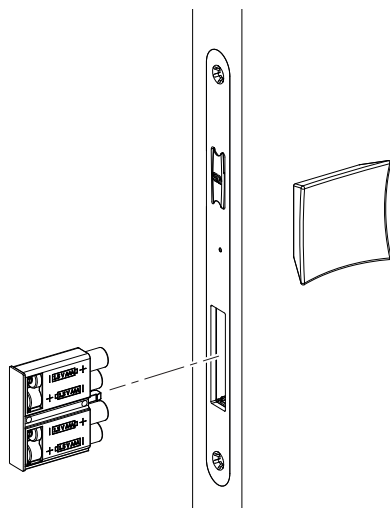
Attach handles



**IMPORTANT:**  
Component "C" enables an emergency release without tools. For this reason, exclusively insert component C from the side from which tools will not be in reach after installation. A hex key is required on the other side (WAF 2.5).

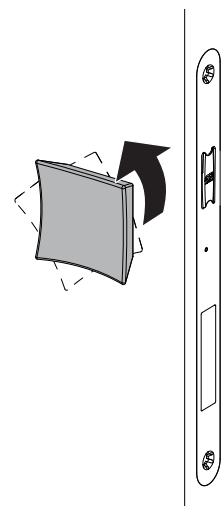
## Installation step 2

Insert the battery compartment



## Emergency release

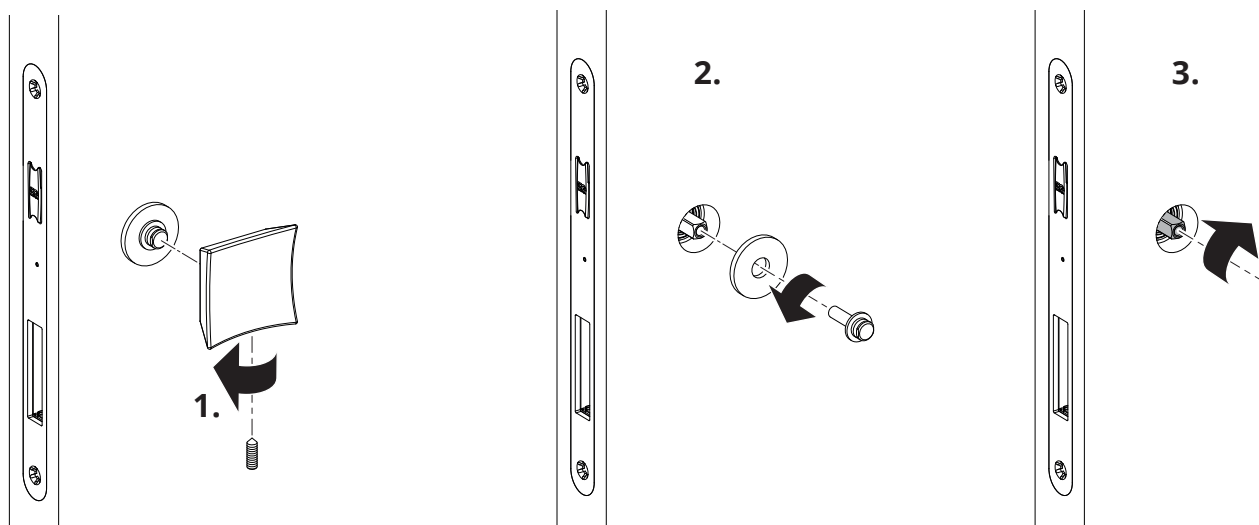
On the side without tools



The door has now been unlocked and can be opened. Turn back the square socket to its original position after having opened the unit!

## Emergency release

On the side where the tool is in reach



The door has now been unlocked and can be opened. Turn back the square socket to its original position after having opened the unit!



Smart Entrance

BY POLLMEIER