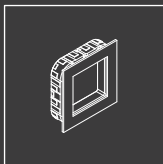
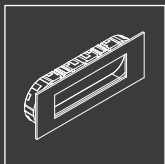


Installation guide SE handles

Biko/Mimas/Narvi/
Pan/Puck



Smart Entrance

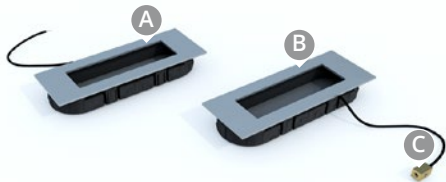
BY POLLMEIER

INSTALLATION GUIDE

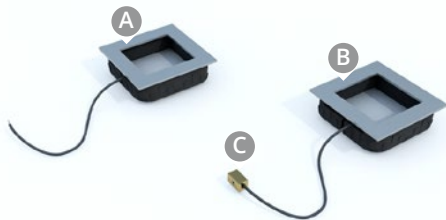
Biko/Mimas/Narvi/Pan/Puck SE handles

Components

Biko handle set



Mimas handle set

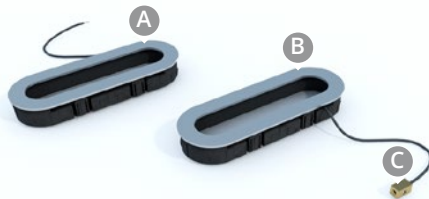


Components

Narvi handle set



Pan handle set

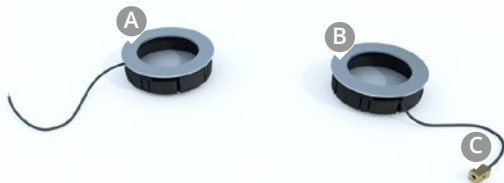


INSTALLATION GUIDE

Biko/Mimas/Narvi/Pan/Puck SE handles

Components

Puck handle set



Safety notes

IMPORTANT!

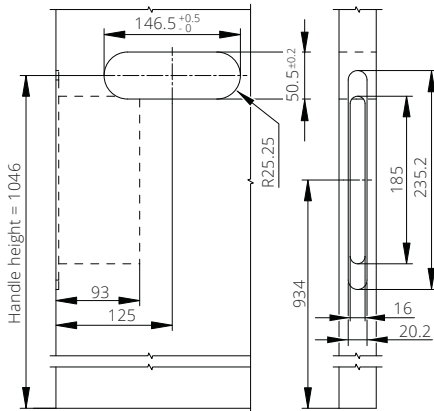
Install the recessed Biko, Mimas, Narvi, Pan, and Puck handles in flush doors only!

An installation in doors with rebate is not permitted as otherwise this would prevent an emergency release of the lock.

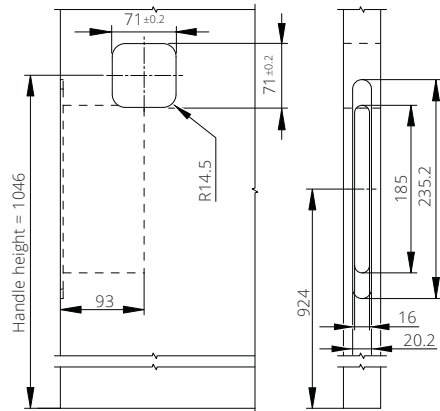


Milling dimensions

Biko/Pan handle set



Mimas handle set

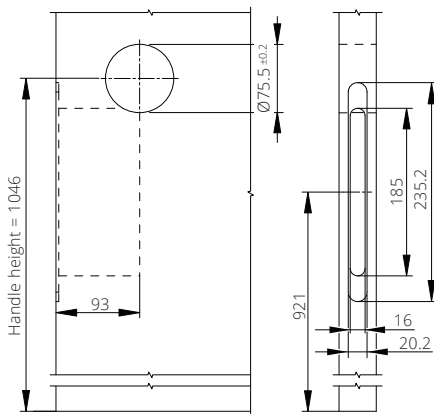


INSTALLATION GUIDE

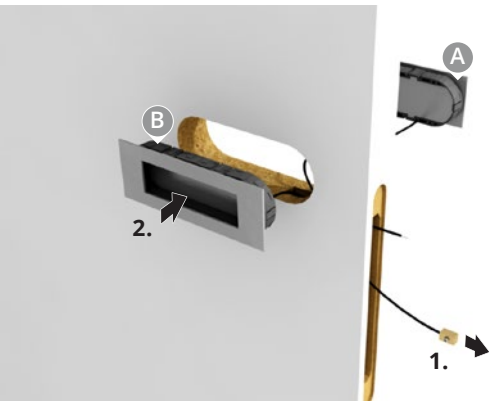
Biko/Mimas/Narvi/Pan/Puck SE handles

Milling dimensions

Narvi/Puck handle set



Installation step 1

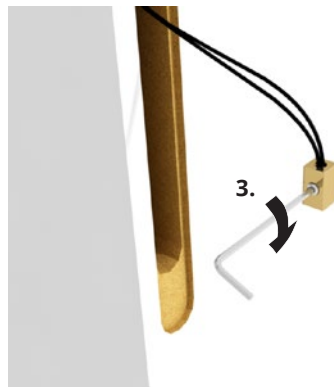
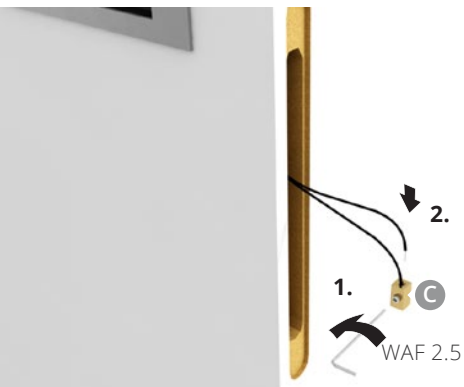


The cables must be fully routed in the lateral cable ducts to prevent damage when pressing in.

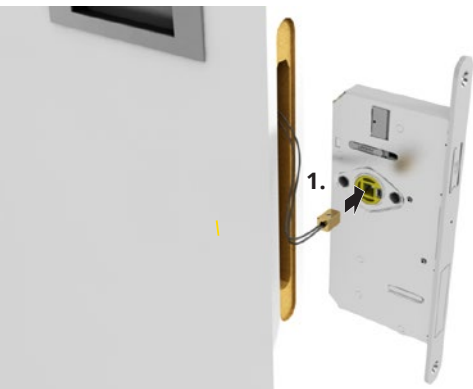
INSTALLATION GUIDE

Biko/Mimas/Narvi/Pan/Puck SE handles

Installation step 2



Installation step 3



Installation step 4





Smart Entrance

BY POLLMEIER